

IN STOCK  
NOW

# Tarasafe Ultra H<sub>2</sub>O

High performance vinyl safety flooring for wet and dry, applications.

Pavimento de seguridad antideslizante de altas prestaciones para aplicación en zonas secas y húmedas.



Compact sheet

R11

Slip Resistant

C

Barefoot

HSE 36+

Slip Resistant

20

R<sub>tm</sub>/R<sub>z</sub>

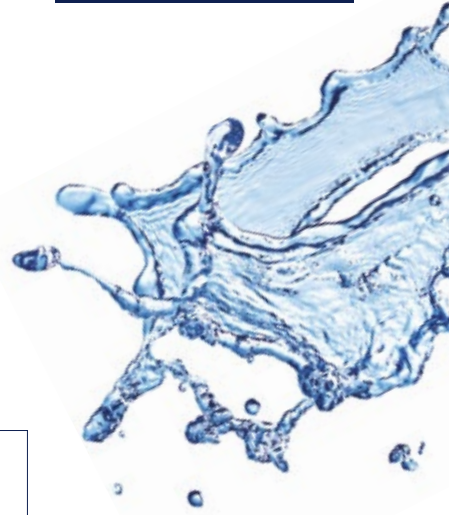
Roughness

Clase 3

De Resbaladidad DTE



Easy to cut



## A sustainable choice



100% recyclable  
39% recycled content



REACH

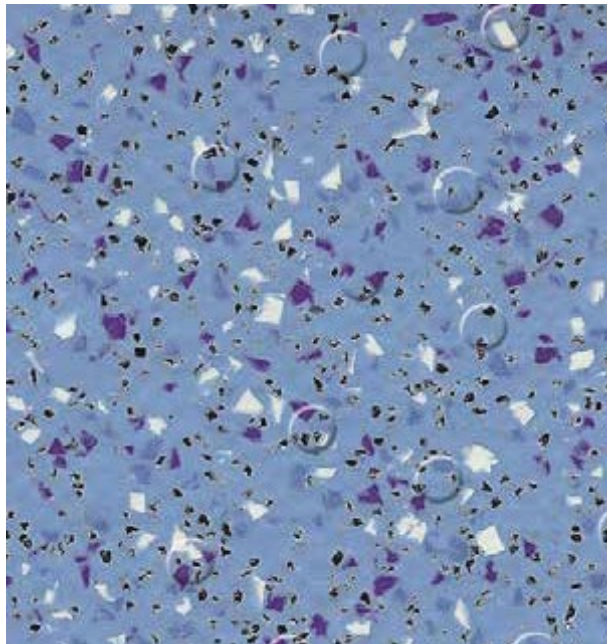
REACH compliant



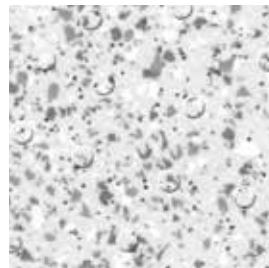
VOC < 100 µg/m<sup>3</sup>



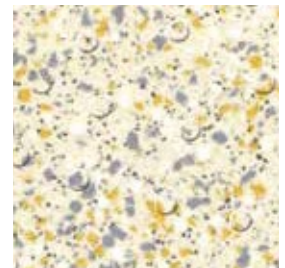
Suitable for both  
barefoot and shod use  
*Apto para pies descalzos  
y calzados*



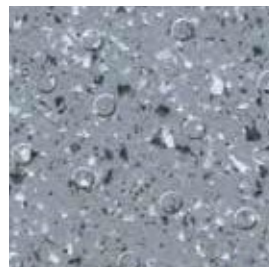
**7413 Ocean Blue**  
NCS: 3030-R90B / LRV: 31.8



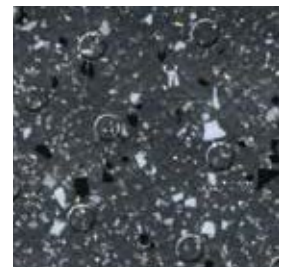
**7720 Iceberg**  
NCS: 1002-B / LRV: 60.6



**7325 Seashore**  
NCS: 1005-Y20R / LRV: 63.0

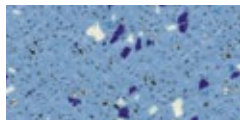


**7746 Stone**  
NCS: 5502-B / LRV: 23.6

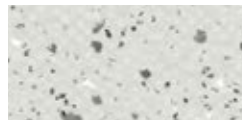


**7732 Gravel**  
NCS: 7502-B / LRV: 9.7

This range complements the **Tarasafe Ultra collection** / *Esta gama complementa la colección Tarasafe Ultra*



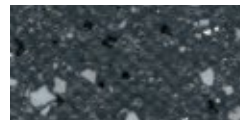
**7482 Halite**  
NCS: 3030-R90B / LRV: 31.8



**8701 Opal**  
NCS: 1500-N / LRV: 59.1



**8709 Granite**  
NCS: 5502-B / LRV: 25.4



**8717 Obsidian**  
NCS: 7502-B / LRV: 10.1



**7383 Diopside**  
NCS: 1005-Y20R / LRV: 59.6

Ask for the Tarasafe Ultra sample card!  
*¡Se puede pedir el catálogo Tarasafe Ultra!*  
NCS: Natural Colour System  
LRV: Light Reflectance Value



Scan here  
for matching  
WELD RODS

# Gerflor®

SAFETY FLOORING

# Tarasafe Ultra H<sub>2</sub>O

gerflor.com / follow us   



Z0014359



**Tarasafe Ultra H<sub>2</sub>O** is an enhanced slip resistant safety vinyl floor covering with a raised emboss designed for applications where there are continuous wet areas.

*Tarasafe Ultra H<sub>2</sub>O es un pavimento de seguridad antideslizante de altas prestaciones con superficie en relieve diseñado para aplicaciones en aquellos lugares con superficies continuamente húmedas.*



It provides exceptional barefoot comfort and is an ideal solution for shower and changing rooms and any high level risk wet areas where heavy duty safety flooring is required.

*Ofrece un confort excepcional al pie descalzo y es una solución ideal para duchas y vestuarios, así como otras zonas con alto riesgo de deslizamiento donde además se necesita un pavimento con alta resistencia al tráfico.*



According to ISO 22196, it has anti bacterial activity against MRSA of 99% after 24h00.

*De acuerdo a la norma ISO 22196, tiene propiedades bacteriostáticas contra el SARM - Inhibe su crecimiento en un 99% después de 24 horas.*



A popular choice in the education, healthcare, leisure, hospitality, housing markets. Easy to clean and maintain. *La elección ideal en educación, salud, ocio, living y residencial. Fácil de limpiar y mantener.*



High level of wet and dry slip resistance.

*Clase 3 de Resbaladicidad según CTE (DB-SUA).*

## Tarasafe Ultra H<sub>2</sub>O

### Description / Descripción

Total thickness on grain side / <i>Espesor total</i>	EN ISO 24346	mm	2.0
Wear layer thickness / <i>Espesor capa de uso</i>	EN ISO 24340	mm	1.00
Weight / <i>Peso</i>	EN ISO 23997	g/m <sup>2</sup>	2400
Width/Length of Sheet / <i>Ancho/Largo de rollos</i>	EN ISO 24341	cm/lm	200/20

### Classification / Clasificaciones

Norm/Product Specification / <i>Normas</i>	-	-	EN ISO 10582
European classification / <i>Clasificación Europea</i>	EN ISO 10874	class /clase	34-43
Fire Rating / <i>Fuego</i>	EN 13501-1	class /clase	Cfl-s1
Static electrical propensity / <i>Comportamiento electrostático</i>	EN 1815	kV	≤ 2
Slip resistance - Pendulum Test (dry & wet) / <i>Deslizamiento húmedo</i>	BS 7976-2	PTV	> 36
Surface roughness	-	µm	Rz > 20
Slip resistance wet - test with oil / <i>Deslizamiento húmedo</i>	DIN 51130	class /clase	R11
Slip resistance wet - bare foot / <i>Deslizamiento húmedo</i>	DIN 51097	class /clase	C
Slip resistance - ramp test / <i>Deslizamiento húmedo</i>	EN 13845 (annex C)	class /clase	ESb
Slip resistance wet - areas / <i>Deslizamiento húmedo</i>	CTE	class /clase	3

### Performances / Cualidades técnicas

Wear Resistance / <i>Abrasión</i>	EN 660.2	mm <sup>3</sup>	≤ 4
Wear Group / <i>Grupo de abrasión</i>	NF 189	group	P
Type binder content / <i>Tipo carga mineral</i>	EN ISO 10582	Type / tipo	I
Dimensional stability / <i>Estabilidad dimensional</i>	EN ISO 23999	%	≤ 0.40
Residual indentation: exigency / <i>Punzonamiento</i>	EN ISO 24343-1	mm	≤ 0.10
Residual indentation (average measured value) / <i>Punzonamiento</i>	-	mm	≤ 0.03
Castor Chair test (type W) / <i>Determinación del efecto de una silla con ruedas (Tipo W)</i>	ISO 4918	-	OK
Thermal Conductivity / <i>Conductividad térmica</i>	EN ISO 10456	W/(m.K)	0.25
Colour Fastness / <i>Resistencia a la luz</i>	EN ISO 105-B02	degree / grado	≥ 6
Chemical Products Resistance / <i>Resistencia a los productos químicos</i>	EN ISO 26987	-	OK
Anti-bacterial activity (MRSA) / <i>Actividad antibacteriana (MRSA)</i> <sup>(1)</sup>	ISO 22196	-	> 99% inhibits growth / inhibe el crecimiento
Use in special wet areas / <i>Uso en zonas húmedas especiales</i>	EN 13553	-	OK

### Environment/indoor air quality / Medio ambiente/calidad aire interior

TVOC after 28 days / <i>TVOC (28 días)</i>	ISO 16000-6	micrograms/m <sup>3</sup>	< 100
Certification / <i>Certificado</i>	-	-	Floorscore®

### Ce marking / Marca de conformidad ce



EN 14 041



(1) The implementation of an effective cleaning method is the best defence against infection.  
*La implementación de un efectivo régimen de limpieza es la defensa más importante contra la infección.*

Uniclass Pr_35_57_71_76
Cl / Sfb
(43) n6

UK reference



Installation and Maintenance Guidelines, as well as complementary ranges available on our Gerflor website.



**IMPORTANT:** The information contained in this document is valid from 01/01/2024 and is subject to change at any time without notice. In the context of constantly changing technology, our customers are responsible, prior to any use, for checking with us that this document is the version in force. Rubber leaves indelible stains on vinyl floorings: do not use mats with rubber backing and replace tubular furniture feet with those made of PVC or polyamide. Place mats of sufficient length at entrances to reduce outside sources of dirt.

## We care / We act Our Commitments for a Sustainable future



**CARBON FOOTPRINT\***  
-20 % kg

CO<sub>2</sub> equivalent/m<sup>2</sup> between 2020 and 2025



**BIOSOURCED CONTENT\*\***  
10 % by 2025



**RECYCLED CONTENT**  
30 % by 2025



**ADHESIVE FREE\*\*\***  
35 % by 2025



**ANNUAL VOLUME RECYCLED**  
60 000 t by 2025



\* Scopes 1 and 2 defined in the GHG protocol \*\* % of activity with biosourced materials \*\*\* % of activity - adhesive free solution